

<p>ETN015 EN September 2018</p>	<p>Supplier Information IMDS Creation of Material Data Sheets in IMDS</p>	
--	--	---

Contents

1	Purpose	1
2	Change history	1
3	Scope	2
4	Related documents.....	2
5	General information.....	2
6	Formal recommendations.....	3
6.1	Description/Name	3
6.2	Surface protection.....	3
6.3	Component level.....	3
6.4	Material level.....	3
6.5	Basic substance level	3
7	Change Management.....	4
8	Transfer Information	5
9	Annex (informative)	7

1 Purpose

This standard describes the requirements of the ETO GRUPPE on their suppliers for the use of the International Material Data System (IMDS).

In accordance with the procedure for product and process release, for any component to be supplied to the ETO GRUPPE, the supplier must document all constituent materials with their percentage by weight in a material data sheet (MDS).

The ETO GRUPPE requires their suppliers to use the International Material Data System (IMDS) for the creation of the MDS.

2 Change history

Issue	Change description
September 2018	English version of the German issue from September 2018

00	2018-08-21	H.BRUEGGEMANN	2018-08-21	A.KUENSTLE	2018-08-23	C.AMANN
DOC-VER.	CHANGE NO.	EDITED	CHECKED	RELEASED		
TEXT ACCORDING TO ISO 16016 The reproduction, distribution and utilization of this document as well as the communication of its contents to others without express authorization is prohibited. Offenders will be held liable for the payment of damages. All rights reserved in the event of the grant of a patent, utility model or design.			DOCUMENT NO. <h1 style="text-align: center;">100011058_Z25_001_00</h1>			
			REPLACEMENT FOR DOCUMENT NO -			

3 Scope

The data are part of the PPA / PPAP. They must be available complete and as an accepted MDS for the inspection of the PPA / PPAP at the latest.

4 Related documents

- Dodd Frank Act US american federal law
- GADSL Global automotive declarable substance list
- IMDS Recommendation 001 General Rules and Guidelines for IMDS Material Datasheets
- Annex I to the IMDS Recommendation 001 Material Classifications in IMDS
- ISO 1043-1 Plastics - Symbols and abbreviated terms
Part 1: Basic polymers and their special characteristics
- ISO 1043-2 Plastics - Symbols and abbreviated terms
Part 2: Fillers and reinforcing materials
- ISO 1629 Rubber and latices - Nomenclature
- ISO 18064 Thermoplastic elastomers- Nomenclature and abbreviated terms
- VDA 231-106 Material classification in motor vehicle construction
- Directive 2000/53/EC Directive of the European Parliament and of the Council on end-of-life vehicles
- Regulation (EC) No 1907/2006 Regulation of the European Parliament and of the Council of concerning the Registration, Evaluation, Authorisation and Restriction of Chemicals (REACH)

5 General information

For the creation of MDS in IMDS the general recommendations from the IMDS Steering Committee must be observed as amended. These can be found on the "Recommendation" link after login into IMDS.

The ETO GRUPPE reserves the right to request previously accepted MDSs again, when legal or customer specific requirements in IMDS have been changed. Moreover, older data records that have not been entered into the IMDS since the recommendation coming into effect can be requested.

6 Formal requirements

6.1 Description

No trade names must be used for the indication of the description.

The description of materials of the classifications 1.1 to 2.1.2 as well as 3.1 and 3.2 (see Annex I to the IMDS Recommendation 001) must be indicated according to the respective applicable standard.

The classifications 5.1a to 5.3 and 5.4.1 (see Annex I to the IMDS Recommendation 001) must be indicated according to the nomenclature of the respective applicable standard (ISO 1043-1 and ISO1043-2 for plastics, ISO 1629 for elastomers and ISO 18064 for thermoplastic elastomers).

6.2 Surface protection

If the product is coated with surface protection (galvanic protective coating, paint or similar), the percentages by weight of the constituent materials of this surface protection must be determined and separately be indicated.

The composition of many standard methods of surface protection is published in MDSs from the IMDS Steering Committee. These MDSs shall preferably be used.

6.3 Component level

The weight deviation equals the difference between the measured and the calculated weight.
It must not exceed 2%

6.4 Material level

The correct classification according to VDA 231-106 must be selected.

Materials of the classification 5.x must consist of at least two basic substances.

For materials of the classifications 1.1 to 2.1.2 as well as 3.1 and 3.2 (see Annex I to the IMDS Recommendation 001) published data sheets from the "IMDS-Committee" (ID 423), "IMDS-Committee / ILI Metals" (ID 18986) or „Stahl und Eisen Liste“ (ID 313) must be used.

6.5 Basic substance level

- **Deleted or hidden basic substances**

Deleted or hidden basic substances are not accepted.

- **Joker**

Basic substances listed in GADSL or marked as SVHC (**S**ubstance of **V**ery **H**igh **C**oncern) must not be hidden behind Jokers or marked as confidential. This also applies to the conflict minerals (gold, tin, tantalum, tungsten or their derivatives).

- **Process chemicals**

Questions about the fate of process chemicals shall always be answered. The indication of intentionally added substances is mandatory.

7 Change Management

The change management (see Image 1) according to IMDS Recommendation must generally be complied with. the ETO GRUPPE reserves the right to request a new data sheet, however.

If components with identical material number are sent to several plants, the change management must also be complied with.

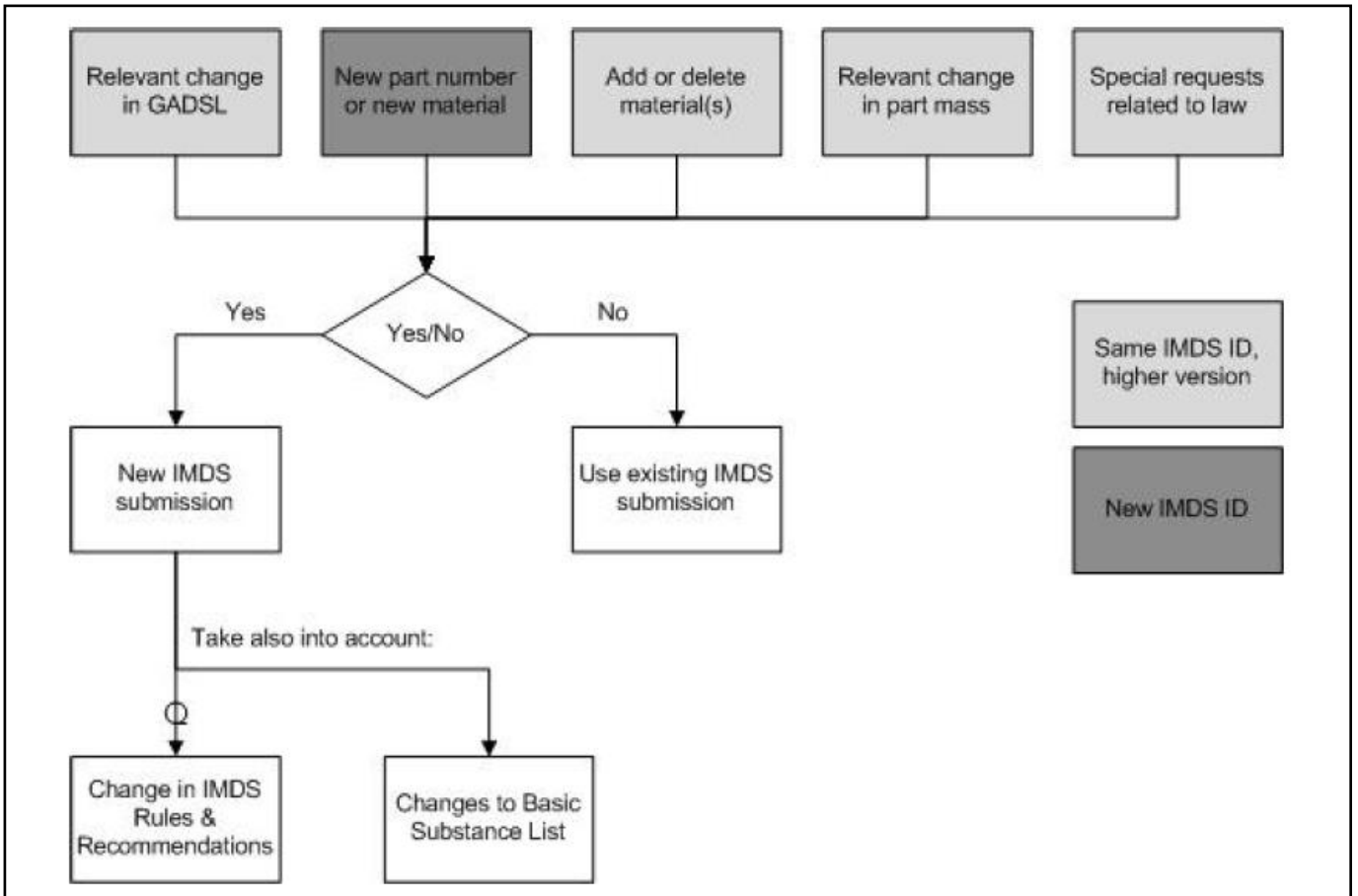


Image 1 (excerpt from IMDS Recommendation 001)

8 Transfer Information

Organisation unit

Please send your MDS to the respective Company-ID where the sampling is conducted.

Plant		Company ID
ETO MAGNETIC GmbH Hardtring 8 78333 Stockach Germany	EST	3645
EKS Elektromagnetik GmbH Steinbeisstr. 50 71665 Vaihingen / Enz Germany	EKS	5748
ETO SENSORIC GmbH Löffelholzstr. 20 90441 Nuremberg Germany	ESN	12693
ETO MAGNETIC Sp. Z o.o. Ul. Eugeniusza Kwiatkowskiego 7 52-407 Wroclaw Poland	EWR	3645
ETO MAGNETIC CORP. 5925 Patterson Ave. S.E. Grand Rapids, MI 49512 USA	EGR	47098
ETO MAGNETIC TECHNOLOGIES (Kunshan) Co. Ltd. GuZhen Road 8 215334 Kunshan P.R. China	EKC	3645
ETO MAGNETIC Mexico, S. de R.L. de C.V. Av Interpuerto No. 675 Col. Parque Logistico San Luis Potosi, 78395 S.L.P. Mexico	ESM	3645

Name

The component name must be in English according to the drawing. Other languages are optional and tolerated in the same field as addition.

Part- / Item No.

Enter material number from the drawing.

Drawing No.

The respective drawing number (document number) is found on the drawing in the field „DOCUMENT NO.“. This document number must be entered without the underscores.

For older drawings, that have no document number, the material number must be entered.

If there is no drawing, please enter „-“ in the field.

Drawing dated

The field must contain the release date of the drawing and that should be entered in the following manner:

YYYY-MM-DD

If there is no drawing, please enter „-“ in the field.

Drawing Change Level

In the field the version and change number of the respective component must be entered in the following manner:

XX / XXXXXXXXXXXXX

If there is no drawing, please enter „00 / -“ in the field.

Example:

SPECIAL CHARACTERISTICS ACC. TO ETN 002		DATE	NAME	
GENERAL TOLERANCES		DRAWN	2015-12-10	
DIN ISO 2768-mH		CHANGED	2018-03-21	A.GONSER
SIZE ISO 14405-1		CHECKED	2018-03-26	B.GRUBER
SIZE ISO 14405-3		RELEASED	2018-03-27	A.RIEDLE
MATERIAL ACC. TO ETD 100012972_Z28_000		PLANT	STOCKACH	GERMANY
1.07% ETO SPECIFIED		DOC-VER.	CHANGES	CHANGE NO.
FIRST ANGLE PROJECTION		06	5	500000010073
DIMENSIONS ARE IN mm		REPLACEMENT FOR MATERIAL	119217-01	
SCALE		2:1		
				MATERIAL NO. 119217-02
				DOCUMENT NO. 100000059292_Z02_000_06
				100 mm

Details

Transfer Information

Company ETO MAGNETIC GmbH [3645]
 Organisation unit -
 Recip. Status edit mode
 Supplier Code
 Name Armature
 Part/Item No. 119217-02
 Transmission/Check Date not available
 Forwarding allowed

Drawing

Drawing No. 100000059292Z0200006
 Drawing dated 2018-03-27
 Drawing Change Level 06 / 500000010073

Purchase Order

Report

9 Annex (informative)

Example for a filled Transfer Information

Details
Transfer-Information
Firma ETO MAGNETIC GmbH [3645]
Org.-Einheit -
Empf.-Status Editiermodus
Lieferanten-Nr. ?
Name
Teil-/Sach-Nr. ?
Übertragungs-/Prüfdatum nicht verfügbar
Weiterleiten erlaubt
Zeichnung
Zeichnungs-Nr.
Stand/Datum ?
Änderungs-Nr. ?
Bestellung
Bericht

Login language German

Details
Transfer Information
Company ETO MAGNETIC GmbH [3645]
Organisation unit -
Recip. Status edit mode
Supplier Code ?
Name
Part/Item No. ?
Transmission/Check Date not available
Forwarding allowed
Drawing
Drawing No.
Drawing dated ?
Drawing Change Level ?
Purchase Order
Report

Login language English