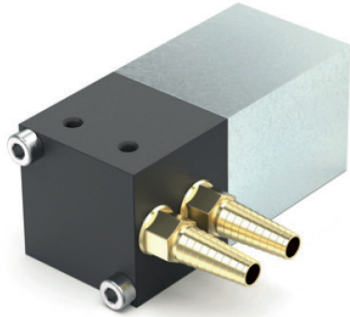


Pneumatic proportional valves for medical technology



Technical data

Pneumatic proportional valves

Voltage	12 - 48 V DC
Valve diameter	2.7 mm
System pressure	6.5 bar
Ambient temperature	0 - 80 °C

Applications

- Dental drilling machine
- Control valve for air flow

Customer benefits

- Small size
- Flexible hose adaption

Features

- Proportional characteristics
- Low hysteresis
- Easy adaption to various hose sizes
- 2/2 valve NC

Detailed information requested?

ETO GRUPPE
info@etogruppe.com