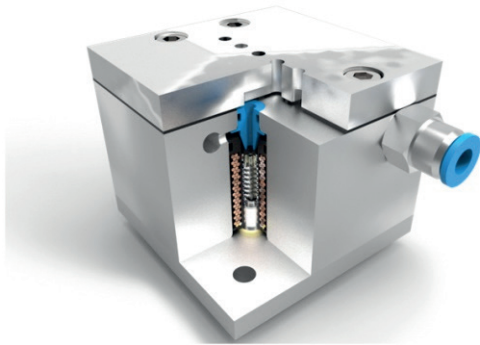


## MAGNETOSHAPE® ultrafast switching valve



### Applications

- Production of pneumatic pulses
- Sorting seeds, grains, foodstuffs, waste, minerals, etc.

### Features

- Very compact inline design
- Extremely short switching time
- Valve block arrangement with very low grid spacing
- Easy to adapt to customer specific requirements

### Technical data

#### MAGNETOSHAPE® ultrafast switching valve (technology demonstrator)

Size	Ø 12.5 mm
Valve grid spacing	Below 2 mm possible
Operating pressure range	Up to 7 bar
Nozzle diameter	2 mm
Valve stroke	0.5 mm
Electrical switching time	0.6 ms @ 48 V
MAGNETOSHAPE® element size	1.5 × 2.5 × 20 mm <sup>3</sup>

### Detailed information requested?

ETO GRUPPE

magnetoshape@etogruppe.com