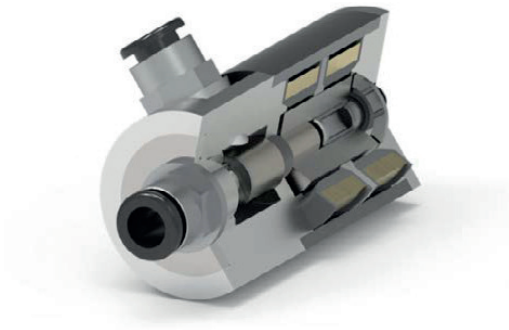


MAGNETOSHAPE® multistables valve

**Applications**

- Energy-efficient gas flow control
- Fluid flow control

Features

- Extremely low energy consumption for stationary fluid flows
- Optional with integrated valve control
- Very compact inline design possible
- Easily adoptable to customer specific requirements

Technical data**MAGNETOSHAPE® multistable valve
(technology demonstrator)**

Size	Ø 37 mm × 77 mm
Operating pressure range	Up to 4 bar
Bore diameter	6 mm
Valve stroke	1.2 mm
Electrical switching time	Approx. 20 ms @ 24 V
MAGNETOSHAPE® element size	3 × 5 × 25 mm ³

Detailed information requested?

ETO GRUPPE

magnetoshape@etogruppe.com