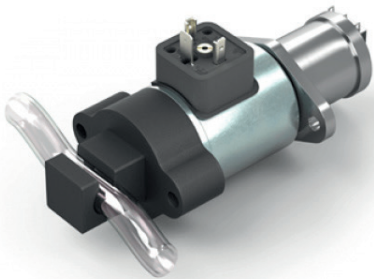


Hose pinch valves for medical technology



Technical data

Hose pinch valves

| | |
|---------------------|--------------|
| Voltage | 12 - 24 V DC |
| Electrical power | 30 W / 3 W |
| Clamp force | up to 45 N |
| Duty cycle | 100 % |
| Hose diameter | up to 6 mm |
| Ambient temperature | 0 - 80 °C |

Applications

- Dialysis machines
- Laboratory equipment

Customer benefits

- Low energy consumption
- Low surface temperature
- Small size
- High force
- Fail-safe closed

Features

- Proven durability
- Adaption to various hose diameters possible
- Normally Closed or Normally Open possible

Detailed information requested?

ETO GRUPPE
info@etogruppe.com