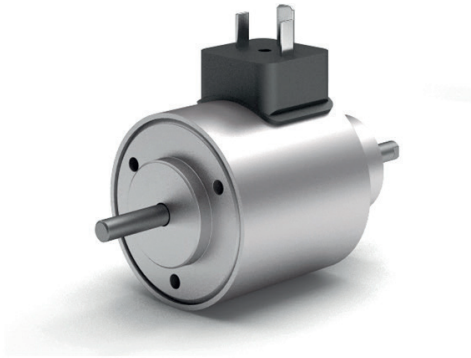


Push/pull solenoids



Applications

- Actuator solenoids for industrial applications and medical technology

Features

- Sizes:
 - Ø 38 mm
 - Ø 48 mm
 - Ø 55 mm
 - Ø 70 mm
 - Ø 80 mm
 - Ø 90 mm
- Models with and without return spring

Technical data

Push/pull solenoids

Voltages	6 - 230 V DC
Power	8 - 780 W (100 % - 5 % ED)
Duty cycle	100 %
Solenoid force at 100 % ED	5 - 70 N
Solenoid force at 5 % ED	30 - 350 N
Stroke	8 - 25 mm

The specifications listed above apply to standard models. Other versions possible upon request.

Detailed information requested?

ETO GRUPPE
info@etogruppe.com