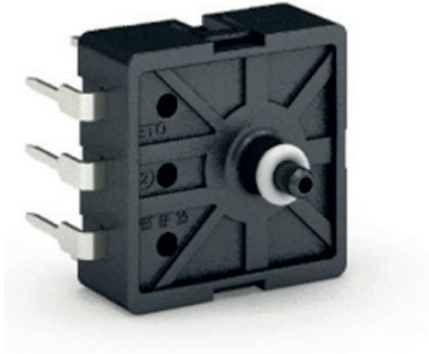


S400LP pressure sensors



Applications

- Pressure sensor for gaseous media for integration on circuit boards in industrial and automotive applications

Features

- Customised pressure range of 0.1 to 40 bar; for soldering or direct board or frame assembly
- For relative and absolute pressure applications
- Absolute pressure version for integration in potted applications
- Pressure and electrical connection according to customer requirement
- Developed for the highest EMV requirements

Technical data

S400LP

Nominal pressure	0.1 to 40 bar
Pressure reference	Relative or absolute
Burst pressure	3x nominal pressure
Supply voltage	5 V or 8 to 32 V
Output signal	Analogue
Precision (-20 to 100°C)	$\leq \pm 1.0 \%$
Operating temperature	-40 to 140°C
Protection class	IP00
Electrical connection	Solder contacts, flex foils, plug-in contacts or other

Detailed information requested?

ETO GRUPPE

info@etogruppe.com