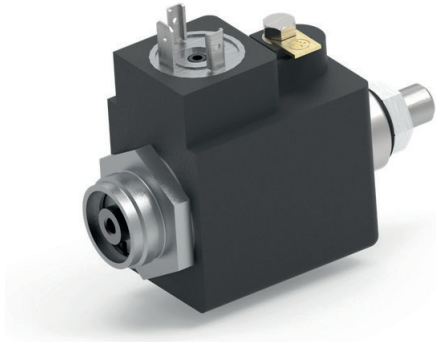


Pneumatic solenoid valves



Technical data

Pneumatic solenoid valves

Voltages	24 - 110 V DC
Power	14 W
Duty cycle	100 %
Operating pressure	Max. 12 bar

Applications

- Pneumatic solenoid valves for air brakes on rail vehicles

Features

- 3/2 way valve in model NO and NC
- Connector model DIN EN 175301-803 A
- Model with manual override possible
- Usually customised designs

Detailed information requested?

ETO GRUPPE
info@etogruppe.com