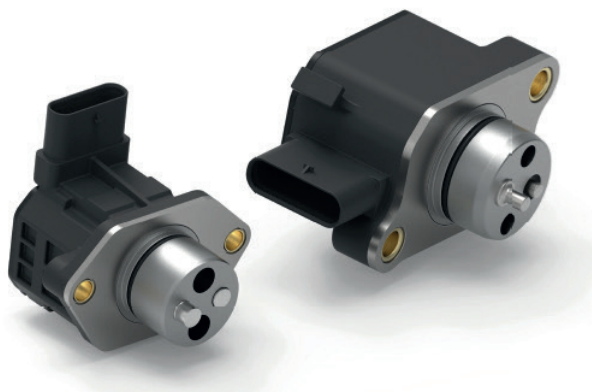


2-pin actuators with sensor



Applications

- Variable valve timing intake and exhaust camshaft
- Cylinder deactivation (partial)

Customer benefit

- Fuel and emission reduction

Features

- Very short switching times feasible
- Bistable
- 2 switchable actuator rams
- Sensors for diagnosing switch position
- Individual design to suit customer installation space and requirements

Technical data

2-pin actuators with sensor

Supply voltage	< 15 to < 22 ms (20 °C)
Resistance	Approx. 2 ohms
Stroke	4 - 4.5 mm
Ram diameter	Approx. 4 - 7 mm
Ram clearance	Approx. 6 - 15 mm
Nominal voltage	12 V DC
Ambient temperature	-40 °C - 155 °C
Protection class	IP6K9K

Detailed information requested?

ETO GRUPPE
 info@etogruppe.com