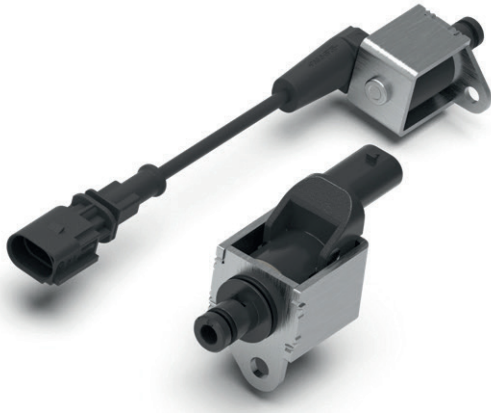


## 2/2 solenoid valves for water pumps



### Applications

- Solenoid valve for controlling an adjustable or switchable water pump

### Customer benefit

- CO2 reduction
- Faster heating of engine and engine oil
- Reduced power consumption of the pump

### Features

- Low leakage
- Cable outlet or moulded connector can be designed according to customer's individual needs

### Technical data

#### 2/2 solenoid valves

Pressure drop/flow	< 0.5 bar at 300 ml/min
Static opening pressure	> 3 bar
Resistance	29 Ohm
Nominal voltage	12 V DC
Ambient temperature	-40 °C - 135 °C
Max. medium temperature	120 °C
Protection class	IP6K9K
Control	PWM (adjustable)

### Detailed information requested?

ETO GRUPPE

info@etogruppe.com