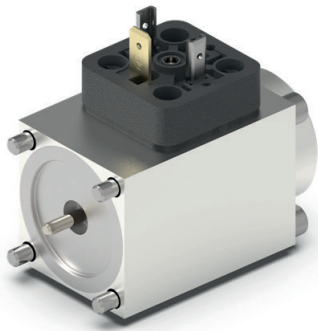


Square solenoids



Applications

- Electromagnetic actuation of hydraulic valves for stationary and mobile hydraulics and for common rail systems in the large diesel field for controlling the output of high pressure pumps

Features

- Sizes:
 - NG3, Ø 25 mm
 - NG4 - CETOP 2, Ø 35 mm
 - NG6 - CETOP 3, Ø 45 mm
 - NG10 - CETOP 5, Ø 60 mm
- Different connector variants such as
 - DIN EN 175301-803 A,
 - DEUTSCH DT04-2P,
 - AMP Junior Timer,
 - free ends
- Switching and proportional models possible
- Isolated models possible

Technical Data

Square solenoids

Voltages	11 - 32 V DC
Power	12 - 55 W
Solenoid force	20 - 185 N
Hysteresis	< 5 %
Duty cycle	100 %
Working stroke	1.0 - 4.0 mm
Total stroke	2.5 - 9.0 mm
Pressure range	70, 160 and 250 bar (dynamic compressive strength)
Tightness	Dependent on connector variant IP65 to IP67

The specifications listed above apply to standard models. Other versions possible upon request.

Detailed information requested?

ETO GRUPPE
info@etogruppe.com