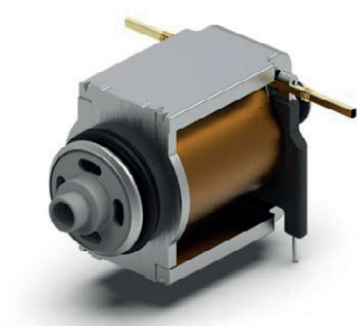


Pneumatic 2/2- and 3/2-way solenoid valves for gear shift unit



Technical data

Pneumatic 2/2- and 3/2-way solenoid valves

Switching time	< 10 ms
Nominal size	Up to 3,6 mm
Pressure range	0 - 13 bar
Nominal voltage	12, 24 V DC
Resistance	4.4 - 13.0 Ohms
Ambient temperature	-40 °C - 130 °C
Protection class	IP22

Applications

- Automated commercial vehicle transmission
- Group and gear change
- Engaging the clutch

Customer benefit

- Fuel and emission reduction
- Greater convenience

Features

- Valve functions:
 - 3/2 NC (normally closed)
 - 3/2 NO (normally open)
 - 2/2 NO
- Gear synchronisation also possible
- Customised electrical contact
- Very high number of cycles
(up to 400 million gear changes)

Detailed information requested?

ETO GRUPPE

info@etogruppe.com