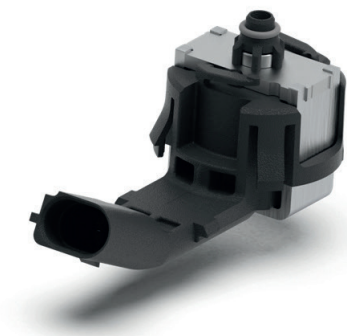


2/2 solenoid valves for engine mounts



Applications

- Solenoid valve for controlling engine/gearbox mounts

Customer benefit

- Improvement of driving comfort

Features

- Compact design
- Assembly via latching elements
- Low leakage
- Cable outlet or moulded connector can be designed according to customer's individual needs

Technical data

2/2 solenoid valves

Pressure	> 1 bar
Nominal size	3 mm
Resistance	27 ohms
Nominal voltage	12 V DC
Ambient temperature	-40 °C - 130 °C
Protection class	IP6K9K
Medium	Air

Detailed information requested?

ETO GRUPPE

info@etogruppe.com