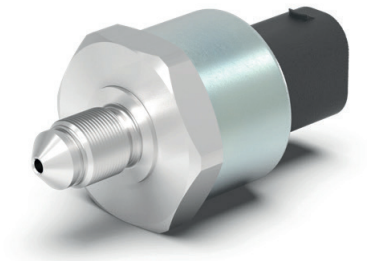


## STM200 pressure sensors

**Applications**

- Pressure sensor for liquid media, e.g. stationary and mobile hydraulic as well as automotive applications with MQS connector

**Features**

- Customised pressure range of 0 to 200 bar with individual pressure connection
- For relative applications and supply voltage of 5 V
- Operating temperature up to 135°C possible
- Pressure connection according to customer requirement

**Technical data****STM200**

Nominal pressure	0 to 200 bar, min. 50 bar
Pressure reference	Relative
Burst pressure	350 bar
Supply voltage	5 V ± 0.25 V DC
Output signal	Analogue
Precision (-20 to 100°C)	≤ ± 2.0 %
Operating temperature	-40 to 135°C
Electrical connection	MQS-3 contacts
Pressure connection	M10x1, metallic seal seat
Protection class	IP67 or IP6K9K

**Detailed information requested?**

ETO GRUPPE

info@etogruppe.com