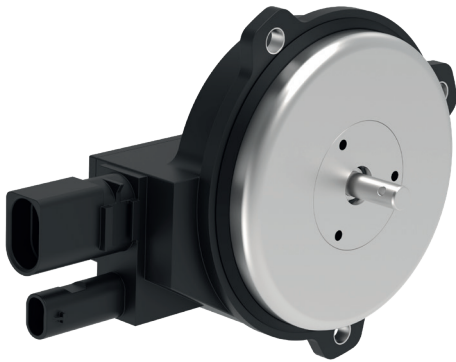


Motorized Phaser



Applications

- Actuation of a mechanical camshaft phase adjuster via a gearbox
- Mounting on the cylinder head of an internal combustion engine
- Actuation of a variable camshaft via a gear unit for various applications

Features

- Very flat design

Customer benefits

- High dynamics and control accuracy
- Diagnostics via LIN bus possible

Detailed information requested?

ETO GRUPPE
info@etogruppe.com

Technical Data

Motorized Phaser

Torque	up to 0.45 Nm
Speed	up to 7.000rpm
Nominal voltage	9.8 - 16 V
Current consumption	< 40 A
Ambient temperature	-40 °C to +150 °C
Protection class	IP6K9K
Control	PWM
Electronics	integrated
Preset signal	PWM input signal
Actual signal	PWM output signal (speed and direction of rotation measured with sensors)
Diagnosis	LIN BUS interface possible